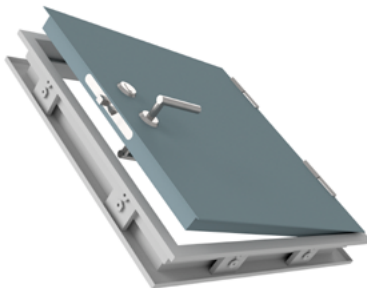
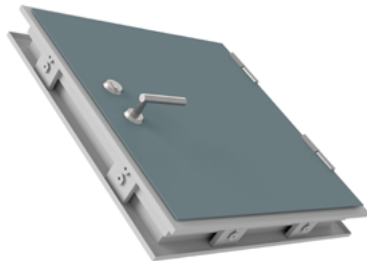




### RP100-A60



#### Lightweight rabeted steel hatch construction

<b>Description</b>	The product has a smooth and stable finish and can be adapted to most environments. Solid hinge with screwed fastening in door leaf and in frame.
<b>Frame and threshold</b>	The door is delivered with pre-Insulated frame in accordance with certificate. Adjustable bushings are included for easy installation. Mitred and bolted frame solution with double fixing points. Standard gasket groove within the frame and 20 mm fixed threshold. Standard fame type is A-IK.
<b>Materials</b>	Frames and door leaves are made of zinc and aluminium coated steel plates (Galfan) with excellent corrosion resistance and good adhesion to surface treatment
<b>Finishes</b>	Original material (Galfan) without painting and priming
<b>Hardware</b>	Locksets and strike plates in accordancie with certificate licence
<b>Gasket</b>	Our standard doors comes without gasket. Gasket can be ordered separately.
<b>Door thickness</b>	52.0 mm
<b>Sheet thickness of door leaf</b>	1.0 mm
<b>Sheet thickness of door frame</b>	1.5 mm
<b>Insulation</b>	50.0 mm
<b>Weight</b>	approx. 37 kg/m <sup>2</sup>
<b>Fire rating</b>	A60
<b>Quality assurance</b>	In accordance with NS EN ISO 9001

Nobb nr.	Rapp Bomek Part nr.	Product name	Model
23609340	RP100-101	Fire rated hatch A60 06X06h Galfan Pyrotec	Single leaf Frame A-IK
23609357	RP100-102	Fire rated hatch A60 06X06v Galfan Pyrotec	Single leaf Frame A-IK
23609365	RP100-103	Fire rated hatch A60 08X08h Galfan Pyrotec	Single leaf Frame A-IK
23609373	RP100-104	Fire rated hatch A60 08X08v Galfan Pyrotec	Single leaf Frame A-IK