



S070S



RAPP BOMEK S070S doors are designed and manufactured to meet the requirement in SOLAS 74 and IMO FTP code.

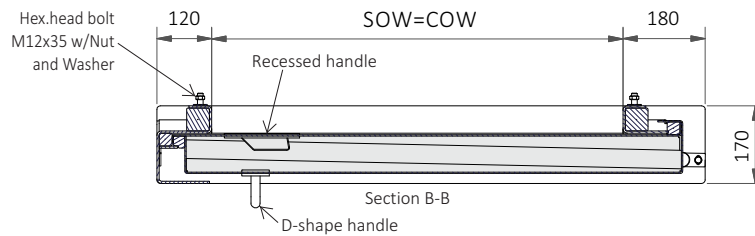
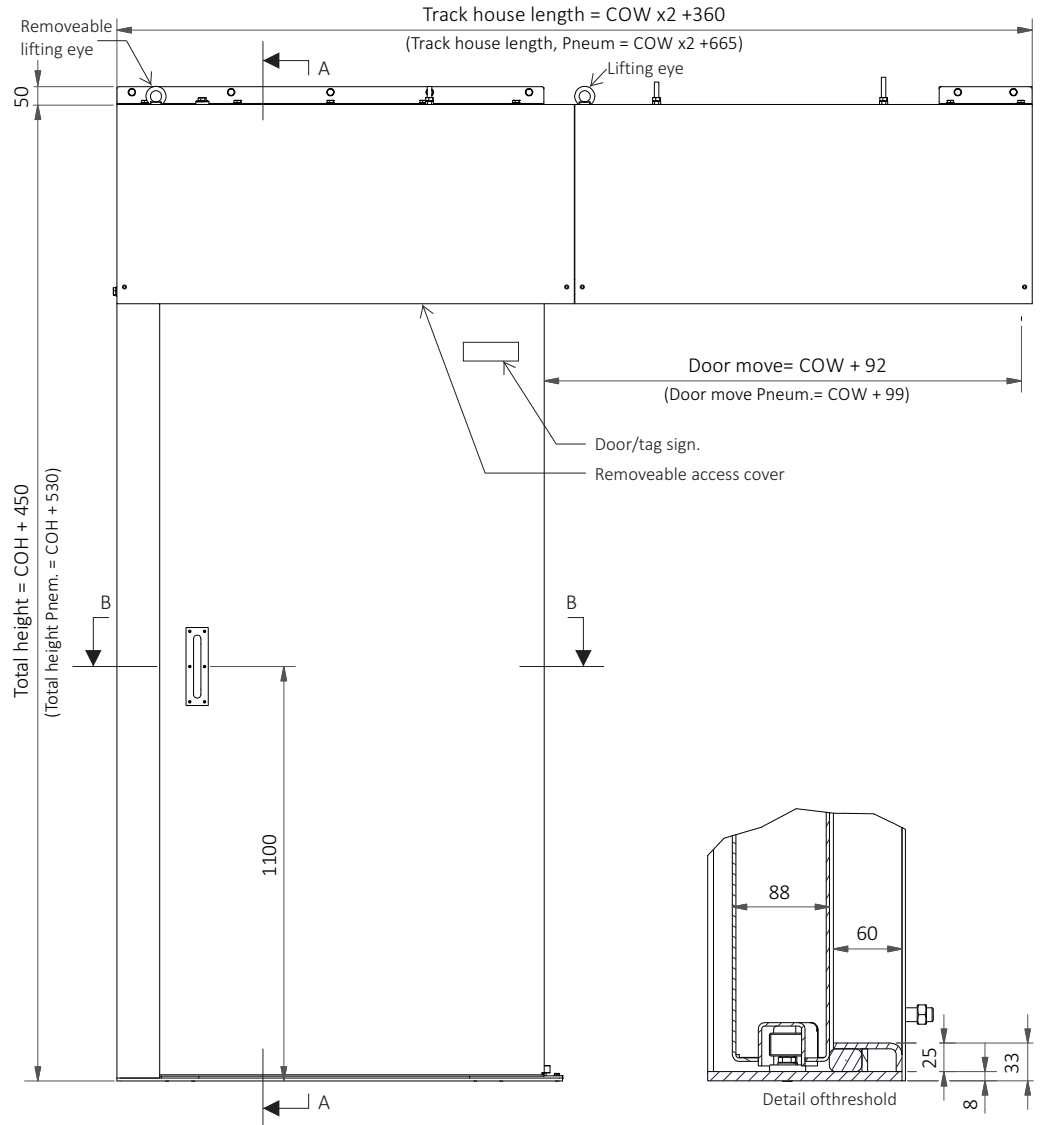
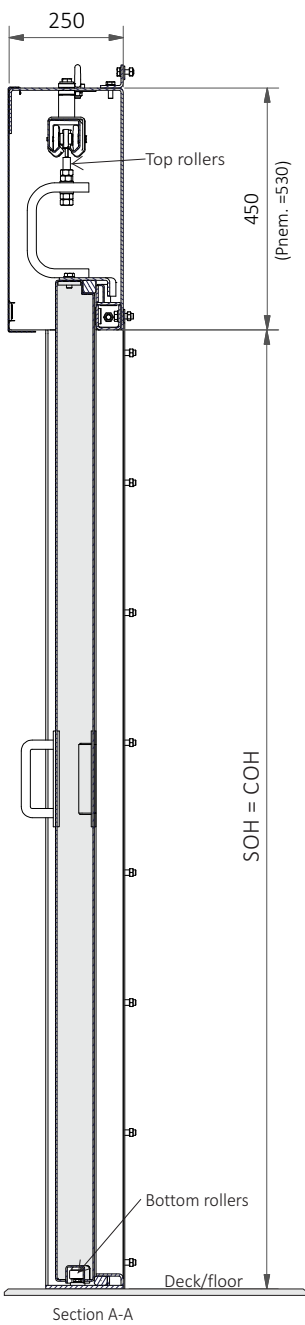
Door type code:	According to NORSOK C-002, M2, H1 and H2.
Certification:	Class societies type approved
Fire rating:	Non-Rated, A0 and A60
Part no.:	RBFD070S
Door leaf:	The door leaf is constructed of an outer shell of 3 mm thick steel plate on both sides of an insulating core. The door leaf is internally stiffened using angle profile. The total leaf thickness is 88 mm.
Door frame:	The door frame is made of 5 mm steel plate and the door frame profile is u and z-shaped according to the drawing.
Track house:	To protect the rail, rollers and the brake, the door is designed with a track house, this also to simplify the installation of the door. For easy access to the rail, rollers and the brake the track house is designed with an access cover.
Material:	The door leaf and frame are made of either mild steel or stainless steel. Mild Steel finished with NORSOK M501 painting system. Stainless Steel brushed finished.
Hang rollers:	The door leaf is connected to the upper rail system at two suspension points, the rollers are of Rapp Bomek heavy duty design. Each roller is designed with 4 wheels which gives the door leaf a smooth movement. The rollers are adjustable and are made of stainless steel.
Rail:	The rail is installed inside the track house and is adjustable. The rail and the rail brackets are of Rapp Bomek design, and made of stainless steel.
Bottom rollers:	The door is designed with 2 adjustable bottom rollers of Rapp Bomek type, one single bottom roller, in front, and one double bottom roller, rear. The bottom rollers are made of stainless steel.
Closing:	The door is self closing by the adjustable sloping track mechanism. An adjustable belt brake is controlling the closing speed of the door leaf.
Handle:	The D-shape handle on the track side is of special Rapp Bomek design and a recessed type on the opposite track side, the material used is stainless steel.
Gasket:	The fire gasket between door leaf and frame is made of silica fibre.
Installation:	Bolted installation. The door frame is pre-drilled for bolted installation. Installation bolts M12x35 with nut, washer, and 3x30mm gasket.
Sound rating:	Rw 40dB.
Weight:	CO=900x2100, estimated to 500kg
Marking of product:	To comply with NORSOK C-002, edition 4, chapter 7.10 and 7.16 and DNV's requirements for marking of products, the door leaf is provided with a tag/door sign to fulfill these requirements.

Hardware and accessories adapted to the door type, on request.



RAPP BOMEK

SINGLE SLIDING, S070S A60 FIRE RATED DOOR



Abbreviations: COW - Clear Opening Width
COH - Clear Opening Height
SOW - Structural Opening Width
SOH - Structural Opening Height